



# Education

## ESL-Beginner



For the Teacher

General Information

# Welcome to Featherdale Wildlife Park!

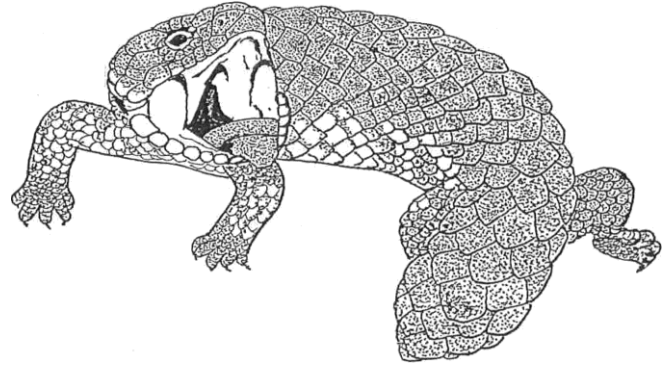
Our Wildlife Park is a great place for learning. Our Education team aims to support students, young and old in learning, by providing resources to assist them and have an educational and enjoyable experience at our park.

This worksheet will provide a range of activities which will allow your students to become more literate and enable them to use and understand the meaning of basic scientific and biological words.

- We have put together a Glossary at the end that will further engage your students and allow them to research the meanings of the language used during the lesson.
- If you have booked a hands-on education lesson, ensure your students quietly wait outside the 'Learning Burrow' 5 minutes prior to your lesson time. These lessons are for your benefit, so please if you have specific requests ask, we can tailor the lesson to whatever curriculum subject matter you wish.
- If there is anything else we can do to enhance the lesson or visit for your students please discuss and we will endeavour to do our best in giving them and yourself the best experience possible.

## Reptile

Fill out the following questions based on a lesson animal. If you are not in a lesson, pick an animal and use the signage.



What am I?

.....

Where do I live?

.....

What do I eat?

.....

How do I protect myself in the wild?

.....

How do I move?

.....

What is the animal's body covering?

.....

What fun fact do you know about me?

.....

.....

.....

## Bird

Fill out the following questions based on a lesson animal.  
If you are not in a lesson, pick an animal and use the signage.



What am I?

.....

Where do I live?

.....

What do I eat?

.....

How do I protect myself in the wild?

.....

How do I move?

.....

What is the animal's body covering?

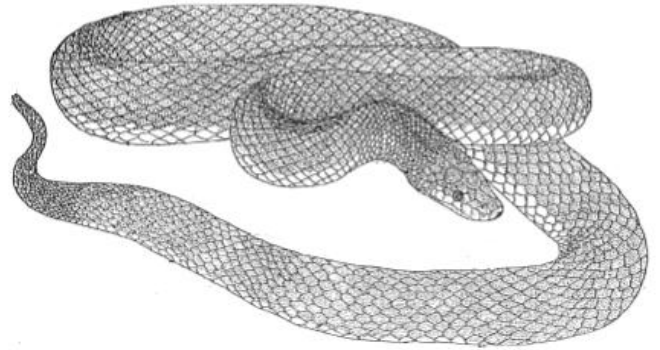
.....

What fun fact do you know about me?

.....

.....

.....



## Reptile

Fill out the following questions according to your lesson. If you are not in a lesson, pick an animal and use the signage.

What am I?

.....

Where do I live?

.....

What do I eat?

.....

How do I protect myself in the wild?

.....

How do I move?

.....

What is the animal's body covering?

.....

What fun fact do you know about me?

.....

.....



.....

## Marsupial

Fill out the following questions according to your lesson. If you are not in a lesson, pick an animal and use the signage.



What am I?

.....

Where do I live?

.....

What do I eat?

.....

How do I protect myself in the wild?

.....

How do I move?

.....

What is the animal's body covering?

.....

What fun fact do you know about me?

.....

.....

## Observation



What am I?

.....

What do I eat?

.....

.....

How do I move?

.....

### TRUE OR FALSE

An emu can fly

TRUE / FALSE

An emu has wings

TRUE / FALSE

Emu run very slow

TRUE / FALSE

The male emu looks after the egg

TRUE / FALSE

A female emu lays green eggs

TRUE / FALSE

*Did you know Echidna's claws on its back legs face backwards! That makes a great comb to scratch its head!*

## What covers my body?

SCALES

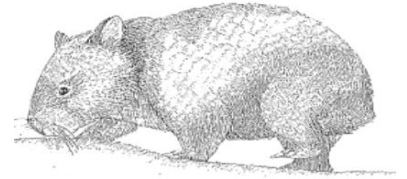
FUR

SPIKES

FEATHERS

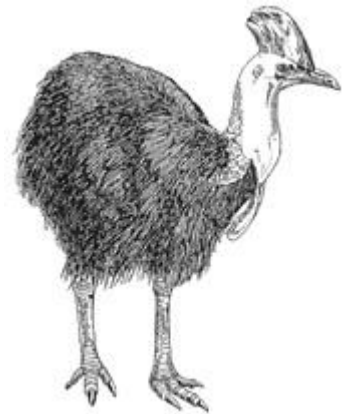
We have .....

On our bodies.



We have .....

On our bodies.



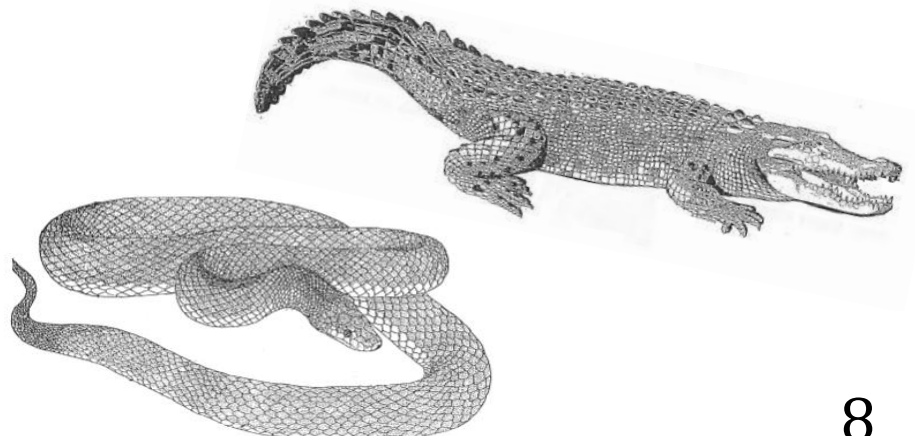
We have .....

On our bodies.



We have .....

On our bodies.





## How do they move?

HOP

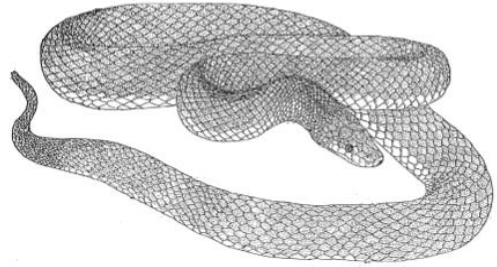
CLIMB

SWIM

FLY

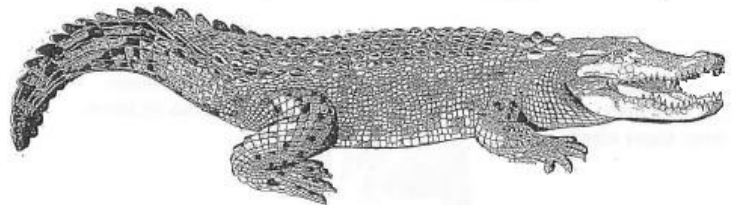
SLITHER

Pythons can ..... on the ground to move from place to place.



Wallabies can ..... away from predators as well as move from place to place

Crocodiles .....  
In water to catch their food.



Birds ..... to move around to find food and escape from predators.

Koalas ..... trees to eat the fresh eucalyptus leaves.



## Big and Small, Short and Tall

We can measure how tall something is, how heavy, how far something goes.

Measurements are all around us.

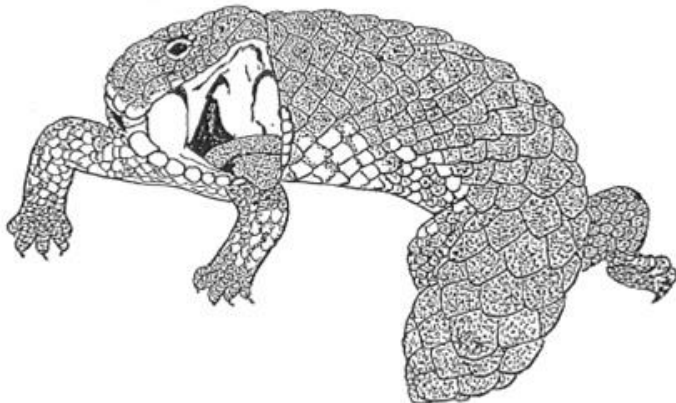
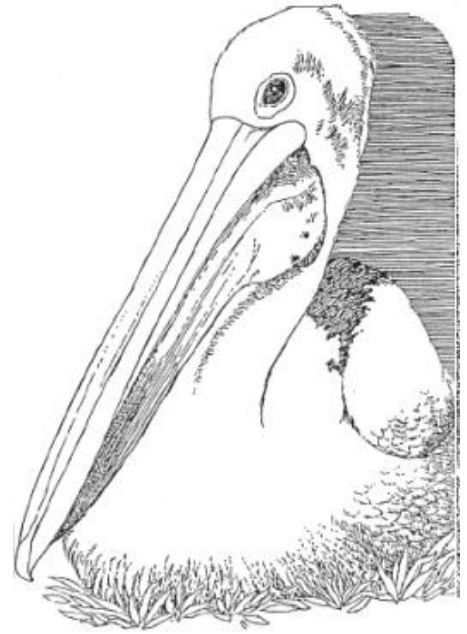


Is the emu **BIGGER** or **SMALLER** than you?

---

Is the Pelican **TALLER** or **SHORTER** than you?

---



Can you walk **OVER** or **UNDER** the shingle back lizard?

---

## Creature Features

Write down the features of this Pink cockatoo.

EYE    BEAK    CREST    WING    FEET    TAIL



## GLOSSARY

**Air:** What we breathe into our lungs.

**Breathe:** When a living thing inhales air.

**Burrow:** A large hole underground.

**Camouflage:** When an animal becomes invisible in its home or habitat.

**Carnivorous:** An Animal that eats another animal, eating only meat.

**Change:** When a living thing becomes different.

**Constrict:** A python that squeezes its food very tightly.

**Covering:** The type of skin an animal has.

**Deforestation:** When trees are taking down and disappear.

**Diet:** What an animal eats.

**Difference:** A thought or way that is not the same

**Eggs:** A shelled oval thing where birds and some reptiles are born from.

**Endangered:** An animal that is disappearing in the wild

**Environment:** The surroundings of a home of an animal.

**Eucalyptus:** A type of Australian tree.

**Extinct:** An animal that no longer exist in earth.

**Feathers:** The body covering of birds.

**Food chain:** An animal that uses a smaller animal as food.

**Food:** What an animal eats.

**Fur:** The body covering of mammals.

**Grow:** When a living thing increases in size or changes.

**Habitat:** The home of an animal, where it lives.

**Herbivorous:** An animal that only eats plants or vegetation.

**Indigenous:** An individual that is native to the country.

**Lifecycle:** The stages of how a baby animal is born.

**Live birth:** An animal that is born alive.

**Living Thing:** Is a thing that breathes moves, grows changes, eats and drinks and has babies.

**Marsupial:** A mammal with a pouch.

**Movement:** How an animal gets to one place or another.

**Nocturnal:** Animal that sleeps during the day and has breakfast at night.

**Omnivorous:** An animal that eats both other animals and plants.

**Predator:** An animal that hunts another animal.

**Prey:** An animal that is used for food.

**Purpose:** The reason why something is done.

**Protect:** To keep safe or away from getting hurt.

**Scales:** The body covering of reptiles.

**Shed:** When an animal loses its old body covering for a new one.

**Shelter:** An area where an animal can stay protected from danger.

**Slither:** The way a snake or python drags itself on the ground.

**Slough:** When a snake or python start to lose their outer layer of skin.

**Spikes:** The hard spines on a echidna.

**Venom:** A toxin that snakes inject from their sharp fangs to make their food die quickly.

**Water:** What an animal drinks.

## ANSWERS

### Page 6

1. Emu
2. A variety of leaves, grasses, flowers, fruits and insects.
3. Emu's can run very fast
4. FALSE
5. TRUE
6. FALSE
7. TRUE
8. TRUE

### Page 7

1. Fur
2. Feathers
3. Spikes
4. Scales

### Page 8

1. Slither
2. Hop
3. Swim
4. Fly
5. Climb

### Page 9

